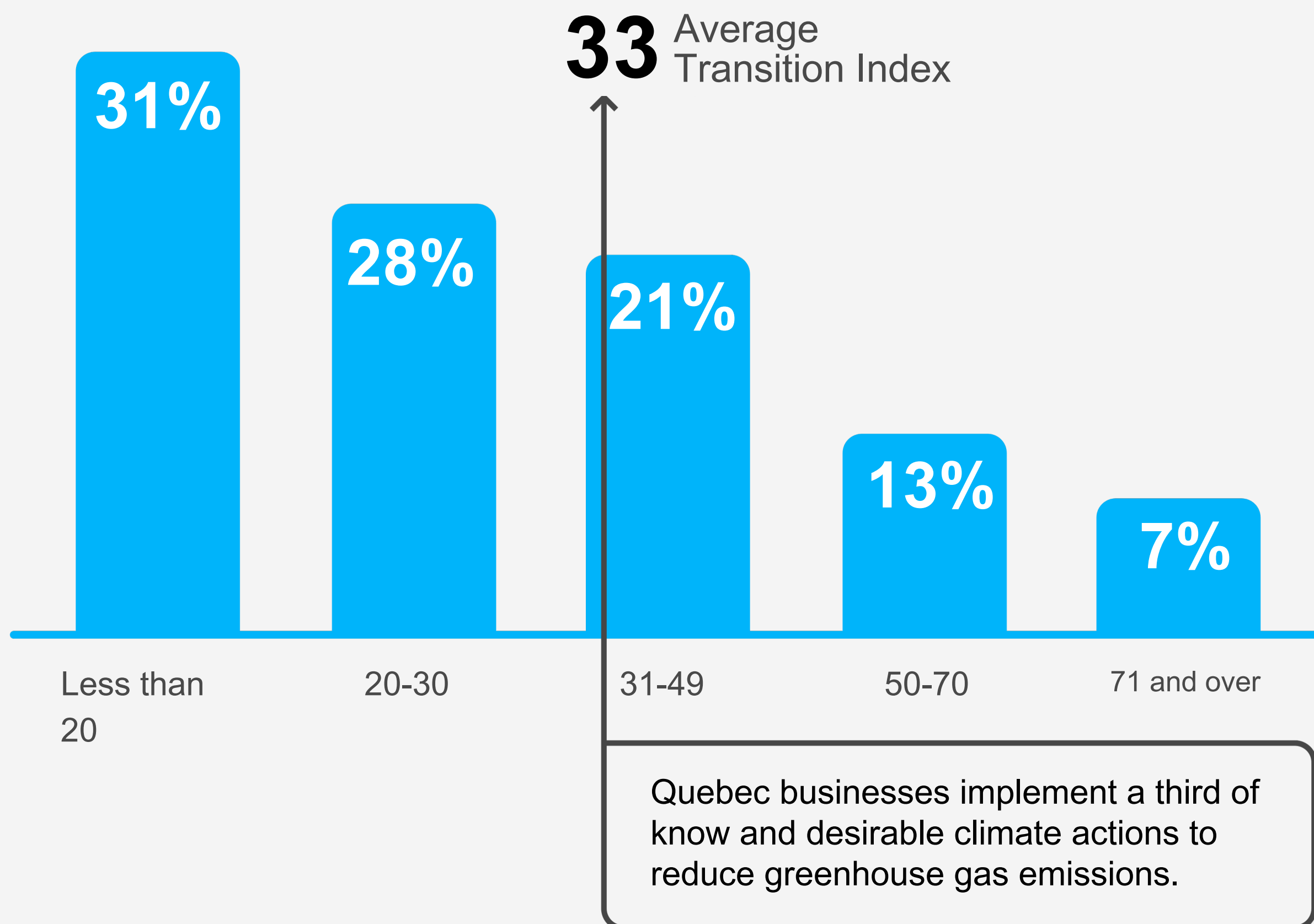


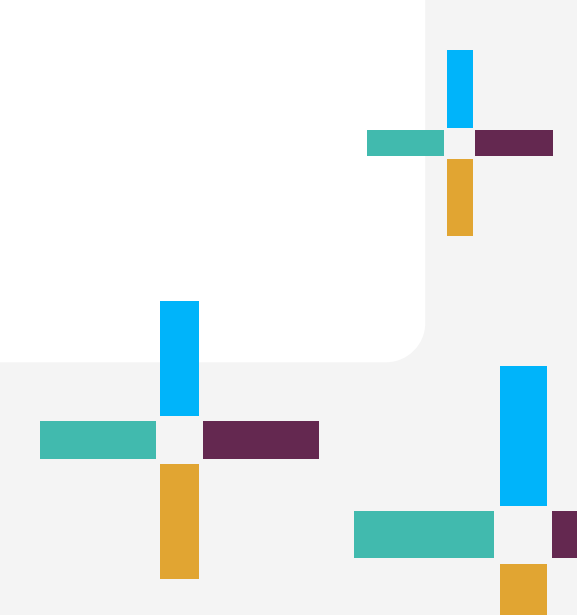
Business Transition Index 2024

The Index provides an overview of the level of commitment to climate action.

Distribution of companies
according to their Transition Index

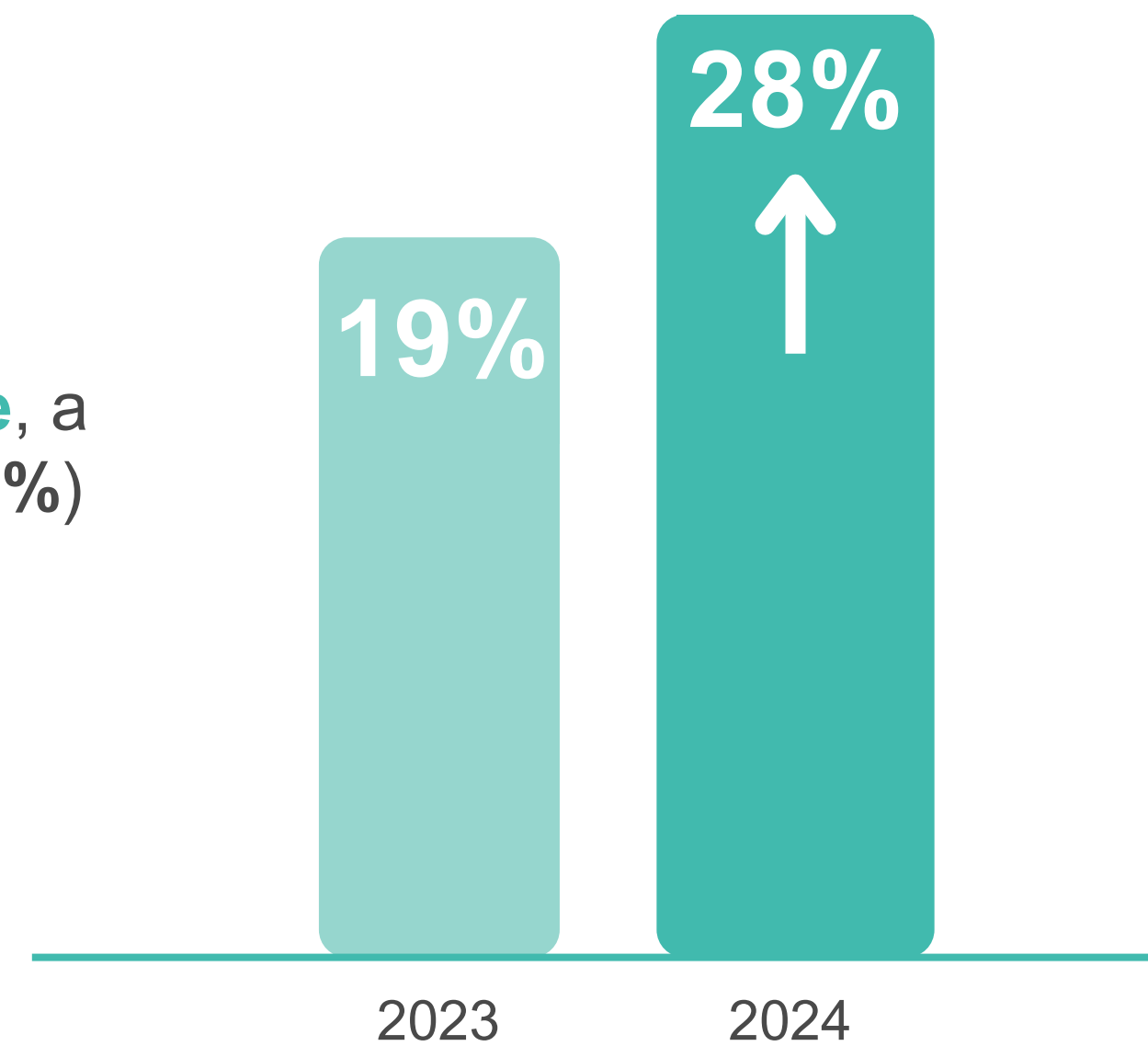


Expertise as a key enabler: The presence of internal or external environmental expertise is the most important factor driving climate action. Businesses with such expertise report an average Transition Index of **59.3**, compared to **24.8** for those without.

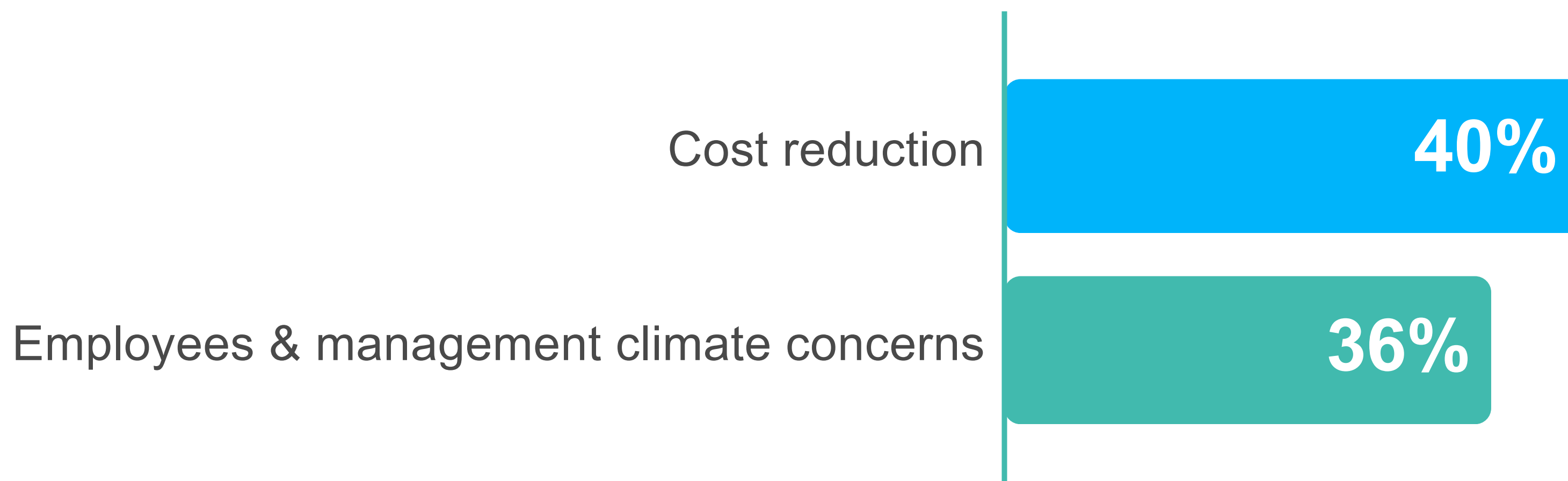


Pressure to reduce GHGs

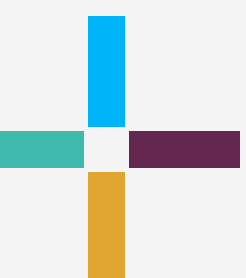
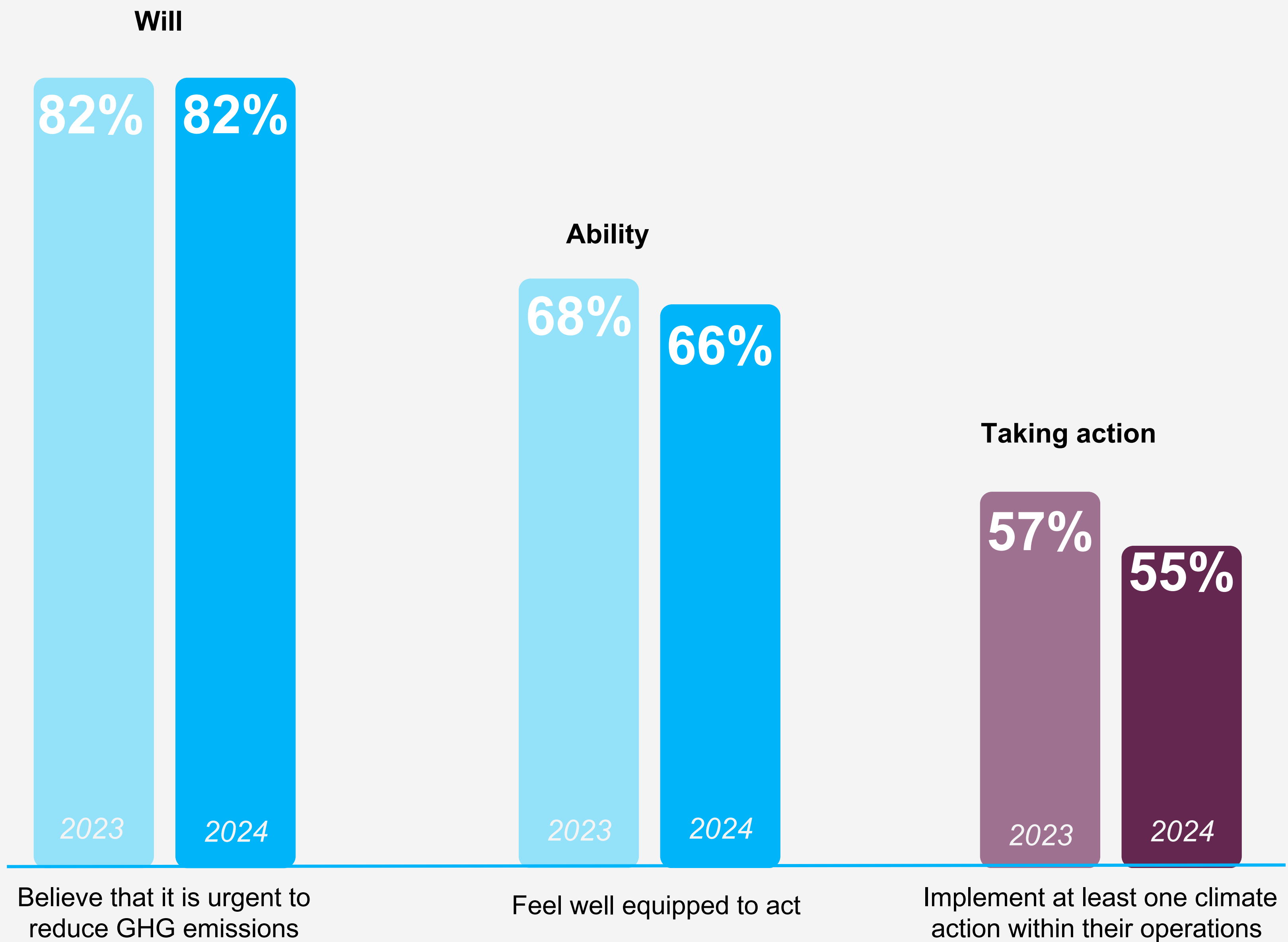
28% cite government as the primary source or pressure, a significant increase. Employees (24%) and customers (22%) are also key influencers.



Two key drivers of climate action

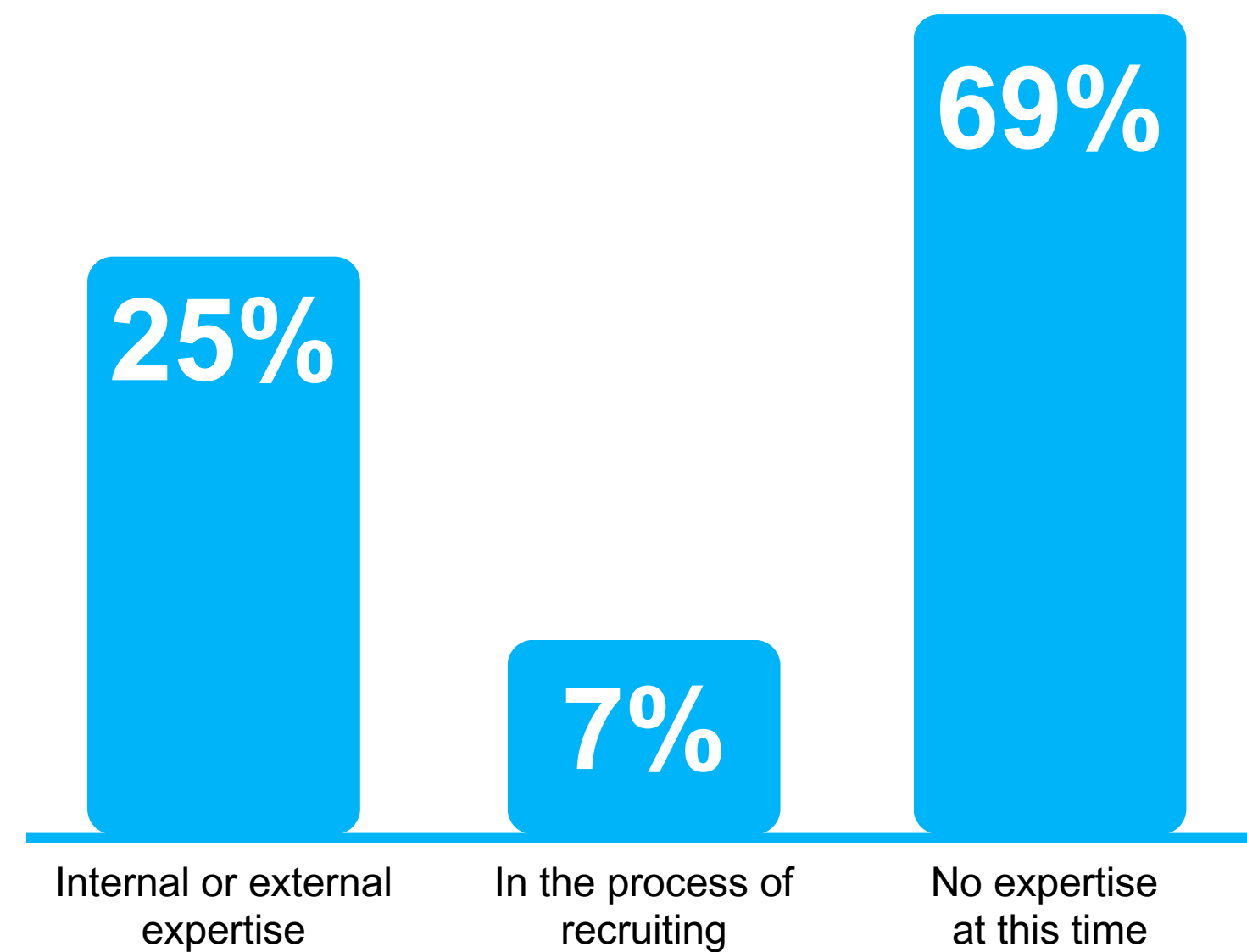


Significant gap persists between will and action



Environmental Expertise

The presence of internal or external environmental expertise is the most important factor driving climate action. Where do companies stand?



Resilience and adaptation to climate change

are concerned about one or more climate event due to their potential impact on their operations

76%

were affected by one or more climate event or their derivatives in the past 12 months

52%

Stay tuned, a report on resilience and adaptation to climate change will be published in January, in collaboration with Ouranos

806 respondents, business
leaders in Quebec

study carried out by Léger

Partners

beneva



Collaborators



Financial support



Experts



Support



Research firm

